



Payment options for Rest employers

Fact sheet

From 1 July 2014 new superannuation Data and Payment standards for contributions will take effect.

The new standards will:

- reduce the time it takes to process super contributions
- lower transaction costs
- provide employers with a consistent and reliable electronic method of making payments.

The new standards mean that you, the employer, will need to make contributions, send contribution information and register new members to your default super fund in accordance with new requirements.

There are two dates that you need to know

Generally if you have 20 or more employees, you will need to start making contributions using the new standards from 1 July 2014.

Generally if you have 19 or less employees, you will need to start making contributions using the new standards from 1 July 2015.

To assist employers comply with the new standards for making contributions, transitional arrangements

have been put in place to give employers more time to move to a solution for making contributions that meets the requirements of the standards.

In accordance with this transitional relief, EmployerAccess will become a compliant solution by 30 June 2015. This means that users of EmployerAccess will not need to change the way you provide new member and contribution information as EmployerAccess will convert your data to comply with the standards.

Online contributions options

You can pay super for all your employees, no matter which super fund they are with, through any of the following online contribution methods:

EmployerAccess

A service provided by Rest's superannuation administrator for employers to use to register members of Rest and provide contribution information for existing Rest members. The payment can then be made using BPAY®, direct debit or electronic funds transfer (EFT). If you have employees with other super funds you will need to use SCH Online or other methods to pay for their super.

EmployerAccess can be accessed through www.Rest.com.au

SCH Online*

An online clearing house service which is available via EmployerAccess on the Rest website. This method enables you to make one payment for all your employees. Currently there is no cost to Rest employers to use SCH Online. SCH Online is not issued by Rest. It is issued by a third party provider, Pacific Custodians Pty Limited (ABN 66 009 682 866), AFSL 295142.

If you wish to find out more, the SCH Online Product Disclosure Statement and Financial Services Guide can be downloaded from **EmployerAccess** or **www.sch-online.com.au**

Small Business Superannuation Clearing House

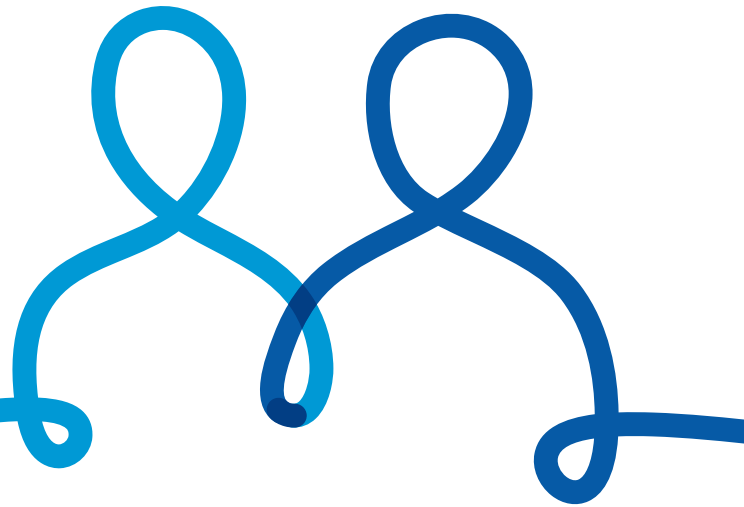
Previously known as the Medicare clearing house, this is a free online superannuation payments service that helps small businesses with 19 or less employees to meet their superannuation guarantee obligations. The Small Business Superannuation Clearing House is now administered by the Australian Taxation Office (ATO). For more information or to access this online service, visit the ATO website at **ato.gov.au/sbsch**

Another clearing house provider

You may wish to use an alternative clearing house to SCH Online to assist you in making contributions for your employees. You should refer to the clearing house provider directly for more information as fees and charges may apply to use their services.


Payroll providers

Your payroll provider may be able to arrange payment of super contributions for your employees using a payroll file and a gateway. You should contact your payroll provider for more information, including any fees and charges.



For further information, please contact us

 **Rest.com.au**

 **Live Chat at Rest.com.au**
Monday to Friday 8am – 10pm and Saturday 9am – 6pm AEST

 **1300 300 778**
Monday to Friday 8am – 8pm



® Registered to BPAY Pty Limited ABN 69 079 137 518.

* Retail Employees Superannuation Pty Ltd, which is the Trustee of the Retail Employees Superannuation Trust, does not issue or arrange the issue of SCH Online. The Rest Trustee does not recommend, endorse or express an opinion about SCH Online. As such the Rest Trustee does not accept liability for any loss or damage you incur in connection with your reliance on SCH Online. The Rest Trustee does not receive any commissions or other benefits from Pacific Custodians Pty Limited as a result of your use of SCH Online. The information in this document doesn't take into account your circumstances. So, before acting on it, you should consider whether it is appropriate for you. Before making any decision about Rest products, please read the relevant Product Disclosure Statement at www.Rest.com.au or call 1300 300 778. Rest has no relationships that might influence our advice to you. Rest does not pay or receive commissions. This information is provided by Retail Employees Superannuation Pty Ltd ABN 39 001 987 789 as Trustee of Rest (Retail Employees Superannuation Trust ABN 62 653 671 394). Issue date: July 2014